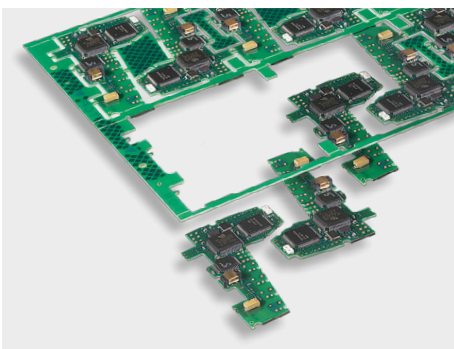


Automated Laser Depaneling of Rigid and Flexible PCBs

LPKF MicroLine 2000 Ci



Shorter Product Pipelines

Just click on the layout files instead of manufacturing expensive tools – that's how easy the LPKF MicroLine 2000 Ci can be employed to process different products. Users enjoy cutting edge competitive advantages thanks to the very high quality and flexible production planning. The MicroLine 2000 Ci systems are remarkably compact, easy to operate, with a very good price performance ratio – a welcome addition to the electronic production team.

The choice of available laser sources for the MicroLine 2000 platform has been expanded by a high power option for increased cutting performance.

| Technical Data: LPKF MicroLine 2000 Ci | |
|--|---|
| Laser (class 1) | Power 10 W, 15 W, 27 W, 36 W, wavelengths 355 nm, 532 nm, ns pulse duration |
| Working area (X x Y x Z)* | 300 mm x 250 mm x 11 mm (11.8" x 9.8" x 0.4") |
| Height of assembly (top / bottom) | 27 mm / 7 mm (1.1" / 0.3") |
| Positioning accuracy | ± 25 µm (1 mil) @ 22 °C ± 2 °C (71.6 °F ± 3.6 °F) |
| Diameter of focussed laser beam | 20 µm (0.8 mil) |
| System dimensions (W x H x D), weight | 875 mm x 1530 mm x 1300 mm (34.5" x 60.2" x 51.2")**, ~ 450 kg (990 lbs) |
| Operating conditions | |
| Facility requirements | 230 VAC, 50 – 60 Hz, 3 kVA, 0.6 MPa (87 PSI), 15 l/min |
| Required accessories | Exhaust unit, external conveyor, production fixture, SMEMA interface |
| Optional accessories | Conveyor vacuum supporting plate, MES connection |

* Max. recognition area (X x Y): 300 mm x 250 mm (11.8" x 9.8")

** Height incl. status light: 2020 mm (79.6")

MicroLine 2000 Ci systems feature multiple variations: MicroLine 2110 Ci (10 Watt laser source), MicroLine 2115 Ci (15 Watt laser source), MicroLine 2127 Ci (27 Watt laser source) and MicroLine 2236 Ci (36 Watt laser source).



LPKF Service & Support

LPKF provides worldwide premium customer support. Learn more: www.lpkf.com/support



LPKF Laser & Electronics AG sells and markets products and provides support in more than 50 countries. Find your local representative at www.lpkf.com.

Worldwide (LPKF Headquarters)

LPKF Laser & Electronics AG Osteriede 7 30827 Garbsen Germany
Phone +49 (5131) 7095-0 info@lpkf.com www.lpkf.com

North / Central America

LPKF Laser & Electronics North America
Phone +1 (503) 454-4200 sales@lpkfusa.com www.lpkfusa.com

China

LPKF Tianjin Co., Ltd.
Phone +86 (22) 2378-5318 sales.china@lpkf.com www.lpkf.com

Japan

LPKF Laser & Electronics K.K. Japan
Phone +81 (0) 47 432 5100 info.japan@lpkf.com www.lpkf.com

South Korea

LPKF Laser & Electronics Korea Ltd.
Phone +82 (31) 689 3660 info.korea@lpkf.com www.lpkf.com



Made in Germany